

W&H PEACOCK
AUCTIONEERS & VALUERS

Mid Century Design

Bedford Auction Centre
Friday 15th May | Commencing at 10am

Viewing: Friday 8th May 9am to 8pm
Saturday 9th May 9am to 5pm
Thursday 14th May 9am to 5pm
and morning of Sale from 9am
www.peacockauction.co.uk



1 A 1950/60's oak double-tambour cabinet with slide drawers to the interior, on a plinth base, 91 x 39 x 163 cm

Est £300 - £400

2 A 1960's Danish two-seater sofa upholstered in black leather on square legs, w. 131 cm *SFP

Est £200 - £300



3 Attributed to Soren Hansen for Fritz Hansen, a three-seater highback sofa, 8000-Series, the beech frame supporting royal blue upholstery, w. 164 cm *SFP

Est £300 - £500

4 A 1930/40's Danish curved 'banana' sofa upholstered in 1980's fabric on square legs, w. 154 cm

Est £500 - £700



5 Attributed to Arne Vodder (Danish, 1926-2009) for Fritz Hansen, a three-seater sofa upholstered in cream check with wings, on square feet, w. 206 cm *SFP

Est £400 - £600

6 John Tabraham (South African) for Kallenbach, a large teak plank coffee table or bench, badge to the underside, 183 x 69 cm

Est £100 - £150

7 Pietro Arosio (Italian, b.1946) for Tacchini, an 'XL' easy chair upholstered in tan leather *SFP

Est £150 - £200



8 Markku Pakkanen for Asko, a pair of Finnish 'Harlekiini' bentwood armchairs with grey webbed seats, labelled *SFP

Est £300 - £500

9 A Scandinavian circular pine coffee table on square legs joined by an X-stretcher, di. 120 cm, h. 50 cm

Est £80 - £120

- 10 A set of four 1960's Danish teak and upholstered dining chairs *SFP

Est £60 - £80

- 11 After Vladimir Tretchikoff (South African, 1913-2006), 'Balinese Girl', lithographic print, image 59 x 49 cm

Est £50 - £80

- 12 After Joseph Henry Lynch (1911-1989), 'Walter Nymph', lithographic print, image 67 x 50 cm

Est £40 - £50

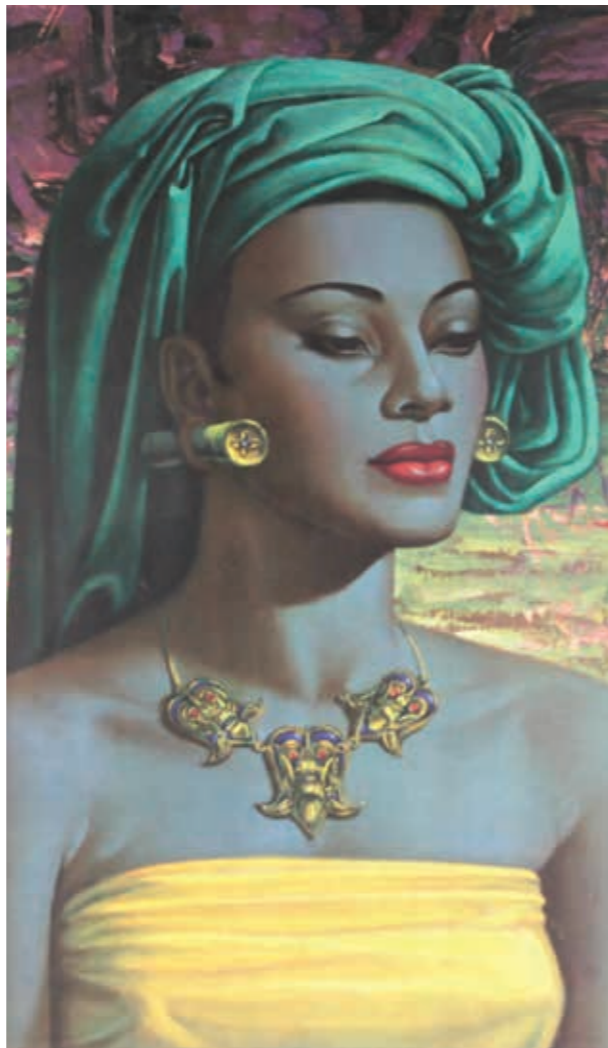


- 13 Tony Hart (1925-2009), A dog in a racing car, inscribed 'To Don, Good Wishes, Tony Hart', pen and ink, 42 x 60 cm, together with another similar drawing by Hart (2)

Est £100 - £150

- 14 Richard Sell (1922 - 2008), 'David's Bookshop', signed and numbered 28/37, RA Summer Exhibition 1993 label verso, lithograph, image 38 x 40 cm

Est £200 - £300



- 15 Sheila Bownas (1925-2007), Design for a fabric panel, '12 inches wide x 2 inches high half drop repeat', image 24 x 20 cm

Est £20 - £30

- 18 A what-not or room divider, the walnut and glazed cabinet resting on a black metalwork frame with slatted upper and lower tiers, w. 134, h. 176 cm

Est £150 - £200

- 19 A set of six 1960's Danish oak framed dining chairs with red, green and blue striped upholstery *SFP

Est £200 - £300

- 16 Designed by Kiyoshi Awazu (Japanese, 1929-2009), '4th International Biennial Exhibition of Prints in Tokyo 1964', Nation Museum of Modern Art poster, image 102 x 68 cm

Est £40 - £60



- 17 Sarah Maycock (contemporary), A view of Dungeness, signed, numbered 7/10, dated '77, image 30 x 41 cm, together with another matching (2)

Est £20 - £30





20 A 1970's teak and crossbanded extending dining table, with a folding leaf, on circular tapering legs, 185 x 92 cm

Est £100 - £150

23 Hans J Wegner (Danish, 1914-2007) for F.D.B. Mobler, a Model J16 rocking chair with beech frame and seagrass seat, label to the underside of one arm, stamp to the underside of the other

Est £250 - £300

24 Hans J Wegner (Danish, 1914-2007) for F.D.B. Mobler, a Model J16 rocking chair with ebonised frame and seagrass seat, stamped to the underside of the arm

Est £300 - £350

21 A 1970's Danish armchair in the manner of Kjaernulf, the oak framed supporting woolen seat and back *SFP

Est £150 - £200



22 Attributed to Bruno Mathsson (Swedish, 1907-1988), a pair of 1970's beech and fabric upholstered 'Pernilla' lounge armchairs *SFP

Est £250 - £350



25 A pair of Saporiti Italian blue vinyl lounge chairs *SFP

Est £150 - £200

26 Asboluv aka Boo Dendy (Ipswich street artist), 'Change is keeping myself together', 124 x 244 cm *Created for the London Afro Punk Festival 2017 ID Magazine

Est £150 - £200

28 Asboluv aka Boo Dendy (Ipswich street artist), 'Afro Girl Afro Punk' (blue), di. 99 cm *Created for the London Afro Punk Festival 2017 ID Magazine

Est £50 - £80

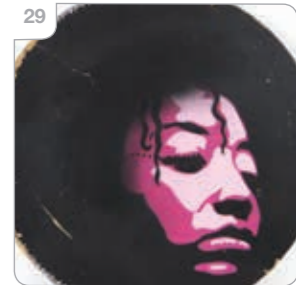
29 Asboluv aka Boo Dendy (Ipswich street artist), 'Afro Girl Afro Punk' (pink), di. 99 cm *Created for the London Afro Punk Festival 2017 ID Magazine

Est £50 - £80



27 Asboluv aka Boo Dendy (Ipswich street artist), 'You're original got you're own style, don't ever change 123 x 199 cm *Created for the London Afro Punk Festival 2017 ID Magazine

Est £150 - £200



30 Asboluv aka Boo Dendy (Ipswich street artist), 'Afro Girl Afro Punk' (orange), di. 99 cm
*Created for the London Afro Punk Festival 2017 ID Magazine

Est £50 - £80

33 After Charles Eames (American, 1907-1978) & Ray Eames (American, 1912-1988), an 'Aluminium Group' bistro table, the white laminate surface on a four-star base, manufacture attributed to Vitra, di. 112 cm

Est £40 - £60

31 A set of three Arkana Model 116 tub chairs with loose charcoal pads on four-star bases, together with a 'tulip' style bistro table, di. 106 cm

Est £150 - £200

34 Diesel Designers for Moroso, a 'Longwave' armchair upholstered in purple velvet, on black tapering legs

Est £120 - £150

36 A pair of 1950/60's bamboo basket chairs on black metalwork frames in the manner of Roberto Mango (2)

Est £70 - £100

32 Attributed to Zuri Furniture, a 'Pebble' chair upholstered in bright floral fabric on a chromed four-star swivel base *SFP

Est £70 - £100

35 Arne Jacobsen (Danish, 1902-1971) for Republic of Fritz Hansen, an 'Oxford' highback swivel armchair upholstered in cream leather on a four-star base, labelled and dated 2007 *SFP

Est £75 - £100

37 A pair of 1930's machinist or factory chairs by Ama-Elastik, the beech seats on adjustable supports and four splayed legs

Est £100 - £150



38 Lisa Norinder for Ikea, a 1990's bentwood occasional table, 62 x 48 x 37 cm

Est £40 - £60

39 A Habitat 'Viso' perspex side table, 40 x 35 x 51 cm

Est £30 - £50

40 Niels Koefoed for Koefoeds Hornslet, a set of six 'Lis' carvers in teak with upholstered seats, manufacturer's stamps to the frames *SFP

Est £500 - £800

41 Ben Mosley (b. 1981), 'A Study of a Gymnast', signed verso, oil on canvas, image 99 x 99 cm *Ben Mosley is a British expressionist artist who is the official artist for Team GB and Artist in Residence at Wembley Stadium.

Est £200 - £300

42 Ruffin Cooper (American, 1942-1992), Statue of Liberty, signed and dated 1979, limited edition print, image 83 x 121 cm

Est £40 - £60

43 After David Hockney (b. 1937), 'Pearblossom HWY (2nd Version) Photographic Collage', poster, 82 x 93 cm

Est £40 - £60



44 Two Pirelli calendars for 1988 and 1989 together with another similar calendar (3)

Est £40 - £60



45 A 1960's oak chest of four drawers on a plinth base by Stag, 76 x 43 x 67 cm

Est £60 - £80

46 Tracey Emin (b.1963), 'Foundlings and Fledglings Our Angels of This Earth', white china teapot with silkscreen print, 2007, h. 16 cm, with the Counter Editions certificate numbered 968/1,000

Est £120 - £150

48



48 Two French brooches modelled as cats by Lea Stein

Est £80 - £120

47 A Shelley six-sitting tea service, numbered 723404, decorated in a turquoise glaze

Est £50 - £80

49 Two French brooches modelled as a cat with ball and a novelty hat by Lea Stein

Est £80 - £120

50 A studio pottery vase inscribed Robinson, h. 17 cm, together with a pair of Continental squat vases, an open bowl and a further vase (5)

Est £40 - £60



51 A pair of Scandinavian armchairs with bentwood adjustable frames and peach leather upholstery *SFP

Est £250 - £300



52 A 1970's Danish three-seater sofa by Magnus Olesen, the oak framed supporting pale blue seats, w. 189 cm *SFP

Est £250 - £300

53 A 1970's Swedish adjustable swivel armchair upholstered in brown leather together with a matching footstool, by Gote Mobler, label to the base of the chair *SFP

Est £200 - £300



54 A late 20th century standing/back chair *SFP
Est £30 - £40

55 Johannes Andersen (Danish, b. 1903) for CFC Silkeborg, a 1960's teak and laminate trolley, badge to the base, 73 x 45 x 69 cm
Est £150 - £200

56 A 1960/70's Danish turned teak standard lamp with a floral decorated shade
Est £40 - £60

57 A 1960's Danish teak corner cabinet with two glazed and two solid doors, on turned legs, w. 88 cm, h. 172 cm
Est £80 - £120

59 John Clappison for Hornsea, a bisque porcelain 'Aphrodite' vase relief decorated with a stylised female bust, printed marks, h. 17 cm
Est £80 - £120

60 Vicke Lindstrand (Swedish, 1904-1983) for Kosta, an 'Ariel' bowl, signed, 19.5 x 14 x 8 cm
Est £50 - £70



61 An Ercol elm Windsor Range sideboard, the three drawers flanked by two doors, on castors, 155 x 44 x 69 cm
Est £200 - £300



62 A near pair of Ercol beech lounge chairs with outswept arms and loose beige striped cushions, together with a matching stool *SFP
Est £200 - £300

63 An Ercol beech square stool on bulbous legs with a loose beige striped cushions *SFP
Est £50 - £80

64 An Ercol elm drop-leaf dining table on beech tapering legs, 136 x 75 x 70 cm, together with four matching spindle-back dining chairs with loose seat cushions *SFP
Est £300 - £500



65 A pair of Ercol elm and beech Model 305 armchairs with loose beige stripped cushions *SFP

Est £200 - £300

66 An Ercol elm coffee table of cushioned rectangular form, on beech bulbous legs joined by a second spindle tier,

103 x 50 x 36 cm

Est £80 - £120

67 Lucien Ercolini for Ercol, an elm and beech sofa/daybed, with 'surfboard' back and curved spindled arms, with loose beige stripped cushions *SFP

Est £600 - £1000

68 A 1970's teak and brass undulating floor lamp with a later cream shade

Est £30 - £50

69 A 1980's Danish twin-spot black floor lamp with red highlighted shades by Lyskaer Belysning

Est £40 - £60

70 A pair of 1980's Gordon Russell elbow or armchairs, the pale red upholstered seats on chromed cantilever frames, with GR labels *SFP

Est £80 - £120

71 Sigurd Ressel (Danish, 1920-2010) for Vatne Mobler, a 'Falcon' lounge chair, the brown leather button upholstered seat on a bentwood frame with four-star base, remains of paper label to the frame *SFP

Est £500 - £600

72 Sigurd Ressel (Danish, 1920-2010) for Vatne Mobler, a 'Falcon' coffee table, the smoked glass circular surface resting on a bentwood four-star frame, di. 90 cm

Est £250 - £300



73 Attributed to Sigurd Ressel (Danish, 1920-2010) for Vatne Mobler, a 'Falcon' stool with a dark brown button upholstered seat on a four-star bentwood frame with leather straps *SFP

Est £150 - £200



74 After Achille & Pier Giacomo Castiglioni for Flos, an 'Arco' style lamp, the marble base holding the arc frame and shade

Est £150 - £200

75 A set of three Danish red bentwood chairs on four-star swivel bases by Kevi

Est £80 - £120

76 Bruno Brunetti (Italian, 1920-1966), a Brutalist painted ceramic and leather mounted vase or 'bottle flask', signed 'B. Brunetti' to the leather base, h. 30 cm *A similar bottle manufactured by La Cava, the company founded in 1956 by Brunetti along with Alberto Caverni and Mario Nuti, was featured in an exhibition by Simone Begani in 2020.

Est £400 - £500



77 Attributed to Bruno Capacci (Italian, 1906-1996), a 1960's glazed stoneware bowl on five raised feet, the turquoise bowl decorated with a seated cat, the base signed 'Raymor Italy R. 122', 25 x 30 x 9 cm *Raymor were a large American importer in, amongst other things, Italian ceramics and glass during the 1940's-1980's.

Est £100 - £200

78 Attributed to Bruno Capacci (Italian, 1906-1996), a 1960's glazed stoneware bowl of oval form, the crazed grey bowl decorated with an elephant and roundel, the base signed 'Raymore R. 119 SA Italy', 24 x 20 x 9 cm *Raymor were a large American importer in, amongst other things, Italian ceramics and glass during the 1940's-1980's.

Est £100 - £200



79 Dante Baldelli (Italian, 1904-1953), a spear-type dish, the red and white ground decorated with a classical urn or ewer, printed marks 'Baldelli Italy 37/59' to the base, 36 x 27 cm *Baldelli was director of the Rometti ceramic workshops from 1928-1954.

Est £100 - £150

81 A group of seven Brian Dewbury studio pottery vases and bowls in red and purple hues including 'Leaves in the Fire' (7)

Est £40 - £60

82 A group of five Brian Dewbury studio pottery footed bowls together with a similar vase (6)

Est £40 - £60

83 A group of Brian Dewbury studio pottery in blue and autumnal glazes including chargers, jug, pots and bowls (13)

Est £80 - £120



85 A Dansk 'Starcluster' taper candle holder designed by Jens Quistgaard, together with two 'Fiesta' candle holders (3)

Est £50 - £80

86 In the manner of Josef Rosinek, a glass vase in pink and amber, unsigned, h. 18 cm, together with a pink cased-glass wavy edge vase (2)

Est £40 - £60



80 Gerhard Liebenthron (German, 1925-2005), a Brutalist pot of vase of gourd form with three staggered necks, incised signature 'GL 77' to the base, h. 14 cm, di. 14 cm

Est £70 - £100

84 A group of Brian Dewbury studio pottery vases, bowls and jugs in autumnal hues (16)

Est £80 - £120



87 A contemporary smoked glass vase signed C. (Catherine) Hough, h. 35 cm

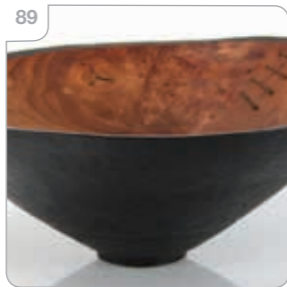
Est £30 - £40

88 Goran Warff (Swedish, 1933-2022) for Orrefors, a large ridged glass bowl on a black foot, signed and inscribed 'GW109', di. 32 cm

Est £30 - £50

89 A turned wooden bowl with leather straps by Mike 'Chai' Scott (b. 1943), di. 36 cm, h. 13 cm

Est £80 - £120



90 A Rosenthal seven-sitting 'Ebony Black' coffee service designed by Raymond Loewy

Est £50 - £80

91 A 1970's chromed 'eyeball' lamp on a straight shaft with a black highlighted base

Est £60 - £80

92 An adjustable stained walnut architect's lamp, believed to be Italian, h. 65 cm

Est £200 - £300

93 Josef Hurka for Lidokov, a pair of Czech Type L204 desk lamps with yellow enamelled bodies, chromed shafts and etched glass shades

Est £150 - £200

94 A Crestworth 'Twiggy' desk lamp designed by Edward Craven-Walker with a matted brown adjustable shade

Est £250 - £300

95 A Poole 'Aegean' plate decorated with a leaf on a brown ground, d. 20 cm, together with two modern Poole vases (3)

Est £30 - £50

96 A Portmeirion 'Chemist Prints' mixing bowl, d. 27 cm and a matching rolling pin, together with a 'Sailing Ships' strainer (3)

Est £40 - £60

97 A porthole design cocktail tray with brown leather handles, w. 40.5 cm

Est £30 - £50

98 Six Figgjo Flint pale blue trios, a similar trio and a green coffee cup and saucer, together with four black and gilt Stavanger Flint cups and six saucers (qty)

Est £30 - £50

99 A Rosenthal clear glass decanter and stopper of slender tapered form, h. 47.5 cm, together with a similar vase of textured design, smaller (2)

Est £30 - £50



100 Kay Blomqvist for Kumela, a textured blue glass vase, h. 15 cm

Est £40 - £60

101 Sebastian Wrong (b. 1973) for Flos, a 'Spun Floor Light' in black, h. 176 cm

Est £100 - £150

BERNARD ROOKE BRUTALIST CERAMICS

Bernard Rooke is a British studio potter, painter and printmaker, recognised for his highly individual, sculptural ceramics associated with the Brutalist aesthetic of the mid-20th century. Born in Ipswich, he studied at Ipswich School of Art and later Goldsmiths College, London, where he turned to ceramics. In 1960 he set up a studio in London, developing a distinctive hand-built style characterised by bold forms and heavily textured surfaces. In 1967 he moved to Suffolk, where his pottery flourished, producing both unique sculptural works and commercially successful lamp bases. His work is held in major collections, including the Victoria and Albert Museum, and remains highly sought after today.

- 102** Bernard Rooke (b. 1938), an undulating Brutalist stoneware totem lamp with incised decoration, 'ROOKE' signature to the base, h. 86 cm
Est £180 - £220

- 103** Bernard Rooke (b. 1938), a Brutalist stoneware lamp with incised XO decoration, unsigned, h. 25 cm incl. bulb holder
Est £80 - £120

- 104** Bernard Rooke (b. 1938), a Brutalist stoneware lamp with incised beehive style decoration, unsigned, h. 31 cm incl. bulb holder
Est £100 - £150

- 105** Bernard Rooke (b. 1938), a Brutalist stoneware flat slab vase with incised stylised dandelion seed decoration, 'ROOKE' signature to the base, h. 28 cm
Est £60 - £80



- 106** Bernard Rooke (b. 1938), a Brutalist stoneware cuboid vase with incised decoration, ink signature 'BR/72/V' to the base, h. 18 cm
Est £60 - £80



- 108** Bernard Rooke (b. 1938), a Brutalist stoneware ovoid vase with incised circular dial-type decoration, unsigned, h. 11 cm
Est £40 - £60



- 110** Bernard Rooke (b. 1938), a Brutalist stoneware lamp of beehive form, unsigned, h. 32 cm (incl. bulb holder)
Est £70 - £100

- 107** Bernard Rooke (b. 1938), a Brutalist stoneware tapering cuboid vase with incised stylised figures, unsigned, h. 25 cm
Est £80 - £120

- 109** Bernard Rooke (b. 1938), an undulating Brutalist stoneware totem lamp constructed of five sections with incised motifs and figures, unsigned, h. 56 cm (incl. bulb holder)
Est £180 - £220

- 111** Alan Wallwork (b. 1931), a stoneware Brutalist lamp of slab form with incised geometric decoration, incised 'W' to the base, h. 20 cm
Est £80 - £120



112 A Swiss polished chrome table lamp by Lumess, labelled, h. 52 cm

Est £60 - £100

113 In the manner of Karl Springer, a globular table lamp with a label to the base stating 'real silver and hand painted crystal', h. 25 cm (incl. bulb holder, excl. shade), together with a similar Indian RIH brass lamp (2)

Est £30 - £50

114 A 1970's Okwa dollhouse including a variety of Lundby miniature furniture, rugs, Honda motorcycle etc.

Est £350 - £400

115 A 1960's Model FH708 beech-framed chair and stool designed by Hans J Wegner (Danish, 1914-2007) *SFP

Est £300 - £500



116 Charles Eames (American, 1907-1978) & Ray Eames (American, 1912-1988) for Herman Miller, an Aluminium Group EA-103 chair with green hopsack upholstery on a chromed frame with a four-star swivel base, Herman Miller label and numbered 938-138 *SFP

Est £250 - £300



117 Illum Wikkelso (Danish, 1919-1999), a 1960's two-seater V11 sofa upholstered in black leather, on Bombay rosewood square tapering legs, w. 141 cm *SFP

Est £400 - £600

118 A Franco Albini 'Lobster Pot' wickerwork stool, di. 60 cm

Est £60 - £80



119 A 1970's Norwegian reclining armchair upholstered in brown leather on a chromed five-star swivel base, by Skoghaug Industri, labelled *SFP

Est £60 - £80

120 A set of four 1970's Danish dining chairs by Farstrup with white frames and striped seats, labelled, inspired by Borge Mogensen's J39 chair *SFP

Est £100 - £150

122 A pair of spherical speakers mounted on black shaft stands with platform bases, h. 96 cm

Est £150 - £200



119

121 A Dutch 'Tomado' shelving system designed by Adriaan Dekker including five red, black and blue shelves, w. 65 cm, and three uprights, h. 69 cm

Est £80 - £120

123 Anna Castelli (Italian, 1918-2006) for Kartell, a 'Componibili' modular three-section storage unit in yellow and brown, 38 x 38 x 71 cm

Est £100 - £150

124 A 1960/70's Danish spindle-back rocking chair in white, designed by Niels Eilersen *SFP

Est £150 - £200

126 A graduated pair of Rorstrand plaques, each decorated with a stylised apple, max l. 28.5 cm, together with a similar ovenware bowl (3)

Est £40 - £60

127 Six Washington Pottery 'Flower Power' side plates, d. 17.5 cm (6)

Est £30 - £50



125

125 Peter Hayward for Vanson, a set of eight teak dining chairs with black vinyl button seats, including two carvers *SFP

Est £200 - £300



128



128 A Walter Hoyle 'Thorn' vase decorated in a mottled blue/yellow glaze, h. 15.5 cm

Est £40 - £60

131

L. Thirkell (20th/21st century), 'Lemons', signed, inscribed and numbered 4/10, coloured print, image 17.5 x 17 cm, together with another work by the same hand titled 'Artichokes' (2)

Est £40 - £60

132

Graham Murrell, '24.09.03', signed verso, dated 2004 and numbered 1/5, limited edition silver gelatin print, image 34.5 x 34.5 cm, together with two further works presumably by the same hand (3)

Est £60 - £100

129

A Guzzini lucite 'UFO' vase of rectangular form, h. 20 cm

Est £40 - £60



130

A 1950's Jaap Ravelli figure modelled as a standing cat, h. 7.5 cm

Est £40 - £60



133

Mark Francis (Irish, b.1962), Untitled (Growth Series), signed, dated '99 and numbered 43/150, limited edition screenprint, image 48 x 40 cm

Est £150 - £200

135

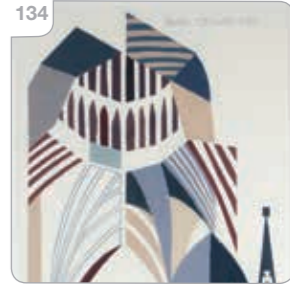


134

Peter Osborne (20th/21st century), 'The Lantern 1, Ely Cathedral', signed, acrylics, 46 x 29 cm

Est £20 - £30

134



135

Contemporary School, Figure at a rodeo, unsigned, coloured photographic print, 89 x 59 cm

Est £20 - £30

136

Erik Hoglund for Boda, an amethyst glass bottle vase, h. 40 cm and a matching vase of hexagonal form, smaller, together with a Blenko 'Top Hat' vase (3)

Est £50 - £80

137

A Mdina blue/green glass paperweight, d. 8.5 cm and a Mdina bud vase (2)

Est £30 - £50

138

A set of three Ikea canary yellow vases, max h. 19.5 cm

Est £20 - £30

- 139 An aluminium expanding concertina rack, max w. approx. 80 cm
Est £30 - £50

- 140 In the manner of Guzzini, a chrome table lamp with white domed plastic shade, h. 59 cm
Est £200 - £250

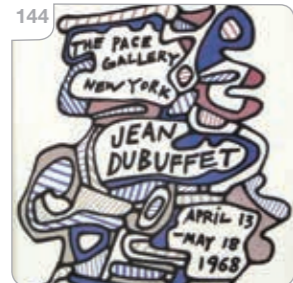
- 141 Simon Palmer (b. 1965), 'The Signaller and the Guard', signed and numbered AP 15/15, colour print, image 47 x 53 cm
Est £70 - £100



- 142 Ben Jeffery (b. 1986), 'Her Majesty Exclusive', signed, limited edition 36/50, image 60 x 60 cm
Est £80 - £120

- 143 After Janowski Witold (Polish, 1926-2006), 'Polske More', lithographic advertising poster, image 97 x 66 cm
Est £100 - £150

- 144 After Jean Dubuffet (French, 1901-1985), 'Painted Sculptures' Pace Gallery, New York, exhibition poster, unknown edition, image 62 x 47 cm
Est £100 - £150



- 145 Theo Dimson (Canadian, 1930-2012), 'Mr Pickwick', Toronto Workshop Productions, lithographic poster, image 69 x 49 cm
Est £30 - £50

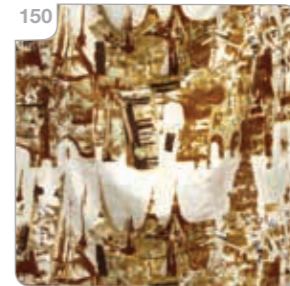
- 146 Theo Dimson (Canadian, 1930-2012), 'Hey Rubel!', Toronto Workshop Productions, lithographic poster, image 66 x 47 cm
Est £30 - £50



- 147 Theo Dimson (Canadian, 1930-2012), 'The Golem of Venice' Toronto Workshop Productions, lithographic poster, image 69 x 49 cm
Est £30 - £50



- 149 A contemporary glass bowl in the manner of Murano, the gilt stripes forming a tiger, di. 40 cm
Est £40 - £60



- 150 A pair of 1960's Sanderson curtains screen printed in the 'Skyline' pattern, 140 x 200 cm each
Est £80 - £120

- 151 Ugo Zaccagnini (Italian, 1868-1947), a turquoise glazed ceramic pot and cover of ridged form, mounted with concentric circles and a matching handle, ink marks to base 'Italy UZ38 3/2', di. 16 cm, h. 9 cm
Est £60 - £80

- 152 An Italian Ceramiche Artistiche Solimene (C.A.S.), Vietri, mug with a grey lava glaze and blue crosses, ink maker's marks to the base, h. 11.5 cm
Est £20 - £30

- 153 Dante Baldelli (Italian, 1904-1953) for Ceramiche Baldelli in Città di Castello, a dish or plate of kidney form, the cream ground decorated with black lines in a Mondrian style, workshop printed marks to the base including '24/720-MAG', 26.5 x 19 cm *Baldelli was director of the Rometti ceramic workshops from 1928-1954.
Est £100 - £150

154 A glazed stoneware dish by Günther Stüdemann (German, 1890-1981) for I.C.S. (Industria Ceramica Salernitana), decorated with fish swimming in the sea, a yellow band to the rim, maker's fish mark and SG initials to the base, di. 23 cm, h. 4.5 cm

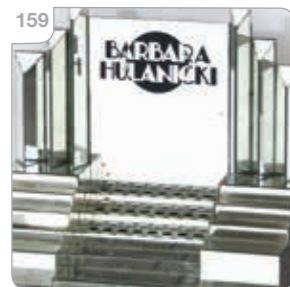
Est £100 - £150

156 Aldo Londi (Italian, 1911-2003) for Bitossi, a 1950's vase and dish decorated with green leaves on a black ground, vase h. 19 cm, dish w. 25 cm (2)

Est £40 - £50

157 Aldo Londi (Italian, 1911-2003) for Bitossi, a 1950's stoneware sake set of figural form, the decanter numbered '95/368 Italy', h. 33 cm, together with a pair of matching cups (3)

Est £80 - £120



159

155 A 1950/60's Italian footed bowl by Bitossi for Goodfriend (US Importer) decorated with horizontal coloured and gold bands, a variation of the 'Thailand' or 'Thailandia' decor, numbered '95/940 Italy' to the base with a label for 'Hogan-Evers Flowers, Oakland', di. 15.5 cm, h. 12 cm *This design is attributed to Aldo Londi (1911-2003) or Ettore Sottsass (1917-2007).

Est £300 - £400



158 A nest of three late 20th century chromed occasional tables with black glass surfaces, max. 50 x 40 x 50 cm

Est £30 - £40

159 An Art Deco style mirrored shop display stand with 'Barbara Hulanicki' to the back over three tiers of lipstick/cosmetic holders, possibly from the Biba store, 54 x 34 x 52 cm

Est £200 - £300

160 In the manner of Juliette Belarti for Adri Belgium, a 1960/70's tile-topped coffee table on a flat chromed frame with second tier, the surface decorated with horses amongst grass, 106 x 45 x 42 cm

Est £60 - £100

161



161

In the manner of Juliette Belarti for Adri Belgium, a 1960/70's tile-topped coffee table on a chromed frame, the surface decorated with a green landscape, 106 x 46 x 41 cm

Est £60 - £100

162 Eleanor Pritchard with Mali Morris RA for the RA Shop, a set of four scatter cushions in the 'Creekside' pattern, labelled (4)

Est £150 - £200

163 Tim Bates for Pieff, a 'Mandarin' chromed coffee table with an Italian marbled surface, 84 x 85 x 38 cm

Est £250 - £300





164 Hans Olsen (1919-1992) for Frem Rojle, a 1960's teak 'Roundette' set including an extending table with a single fitted folding leaf, 106 x 156 cm, and four nesting chairs upholstered in black vinyl, maker's stamps and badges *SFP

Est £1000 - £1500

165 A Danish teak PS System modular shelving system including three uprights, two bureaux, one sliding door cabinet and one glazed sliding door cabinet, with the associated fittings

Est £400 - £500

166 Lucien Ercolini for Ercol, an elm and beech sofa/daybed, with 'surfboard' back and curved spindled arms, with loose floral cushions *SFP

Est £600 - £1000



167 A pair of Ercol 442 beech and elm lounge armchairs together with a matching stool *SFP

Est £400 - £600

168 An Ercol 'Windsor' Range beech fireside armchair *SFP

Est £80 - £120



169 A Stokee 'Varier Peel' chair and stool upholstered in purple *SFP

Est £70 - £100

170 John Brunsdon (1933-2014), 'River Wye Gorge', signed, inscribed and numbered 116/150, limited edition print, image 60 x 45 cm

Est £50 - £80

173



173 A 1970/80's American table, the black glass oval surface resting on a tulip-style base, together with four matching chairs *SFP

Est £150 - £200

174

Niels Koefoed for Koefoeds Hornslet, a set of twelve Danish teak 'Eva' chairs, including two carvers *SFP

Est £600 - £800

171

John Brunsden (1933-2014), 'Edale', signed, inscribed and numbered 319/350, limited edition print, image 45 x 60 cm

Est £50 - £80

172

John Brunsden (1933-2014), 'Welsh Hill Farm', signed, inscribed and numbered 118/150, limited edition print, image 45 x 60 cm

Est £50 - £80



175

A 1960/70's British bedroom suite including a shell-backed tub chair, a teak and laminate dressing table with a concealed mirror and a matching five drawer chest (3)

Est £60 - £80

176



176

A 1980's Danish tiled coffee table with a charcoal frame, 107 x 106 x 54 cm

Est £100 - £150

177

A 1970/80's Danish stained oval coffee table inset with ten tiles, on slab legs, 148 x 88 x 51 cm

Est £60 - £100

178



178

Niels Otto Møller (Danish, 1920-1982) for JL Møller, a set of four teak Model 75 dining chairs with seagrass seats, badges to the frames, together with a 1960's Danish teak and crossbanded drawer-leaf dining table, 130-220 x 84 cm

Est £800 - £1200

179

A set of three 1960/70's teak and crossbanded nesting occasional tables, max. 56 x 41 x 52 cm

Est £50 - £70

180

A Danish bentwood chair by Kevi with 'Club 8' embossed to the back rest, on a five-star swivel base

Est £40 - £60

181 A Tom Dixon 'Offcut Stool Fluoro'

Est £60 - £80



184 A pair of Ed Carpenter 'Pigeon' lamps in yellow and grey

Est £80 - £120

185 A 'Limit' desk fan with a cream enamelled body and mahogany plinth

Est £40 - £60

186 An Ikea 'Grimo' wall mirror, 70 x 70 cm

Est £30 - £50

187 A pair of 1990's Swedish white enamelled ceiling lights attributed to Belid

Est £40 - £60

182 A pair of enamelled side tables in yellow and teal on oak frames, 42 x 42 x 35 cm

Est £30 - £50

183 A contemporary Habitat bentwood desk lamp on a tripod support

Est £30 - £50



188 A Mackenzie-Childs 'Sterling Check' vase of flared form, h. 30 cm, together with a matching bowl (2)

Est £100 - £150

189 A studio pottery six sitting tea/coffee service decorated in a brown glaze (15)

Est £30 - £50



190 Terry Wood (b.1952), Study of a seated female wearing a red dress, signed, acrylics on artists' board, 76 x 50.5 cm

Est £30 - £50

191 Terry Wood (b.1952), Study of a seated female wearing a blue dress, signed, acrylics on artists' board, 76 x 50.5 cm

Est £30 - £50

192 Terry Wood (b.1952), Study of a seated female wearing a white shirt, signed, acrylics on artists' board, 76 x 50.5 cm

Est £30 - £50

193 Calman Shemi (Argentinean/Israeli, b. 1939), 'Terraces in the Galil', coloured tapestry, 127 x 107 cm

Est £200 - £300



194 Matteo Thun (Italian, b. 1952) for Artemide, a 'Choose' desk lamp with tiltable cream diffuser, h. 57 cm

Est £40 - £60

195 A set of 1960's black leather covers with canvas underlays to fit a Poul Kjaerholm (Danish, 1929-1980) for E. Kold Christensen 'PK22' lounge chair *SFP

Est £200 - £400

196 A set of 1960's black leather covers with canvas underlays to fit a Poul Kjaerholm (Danish, 1929-1980) for E. Kold Christensen 'PK22' lounge chair *SFP

Est £200 - £400

197 John & Sylvia Reid for Stag, a 'Fineline Range' chest of two short over two long drawers on spun aluminium legs, 102 x 47 x 71 cm, together with a matching seven drawer dressing table with fitted mirror and leather stool, labelled *SFP

Est £300 - £400

198 A 1980's white gloss/laminate sideboard with perspex/lucite slab ends, the four doors opening to reveal drawers and shelves, 164 x 40 x 92 cm

Est £80 - £120

199 A late 20th century perspex/lucite three-tier trolley with canted corners, on castors, 51 x 36 x 77 cm

Est £40 - £60

200 Attributed to Cees Braakman (Dutch, 1917-1995) for Pasloe, a 1950/60's folding magazine rack

Est £30 - £50

201 A large cylindrical vase decorated with green, yellow and brown bands on a cream ground, in the manner of Bitossi, h. 17 cm

Est £40 - £60

202 Anne Nilsson for Ikea, a green glass 'Diablo' vase, h. 22.5 cm

Est £40 - £60

Mid-Century Design Soft Furnishings Policy

The Furniture and Furnishings (Fire) (Safety) Regulations 1988 (as amended in 1989 and 1993) state that all soft furnishings holding foam must conform to BS 5852 standards. This means that any post-1988 furniture will need to bear a fire label for auction purposes.

The following exceptions apply:

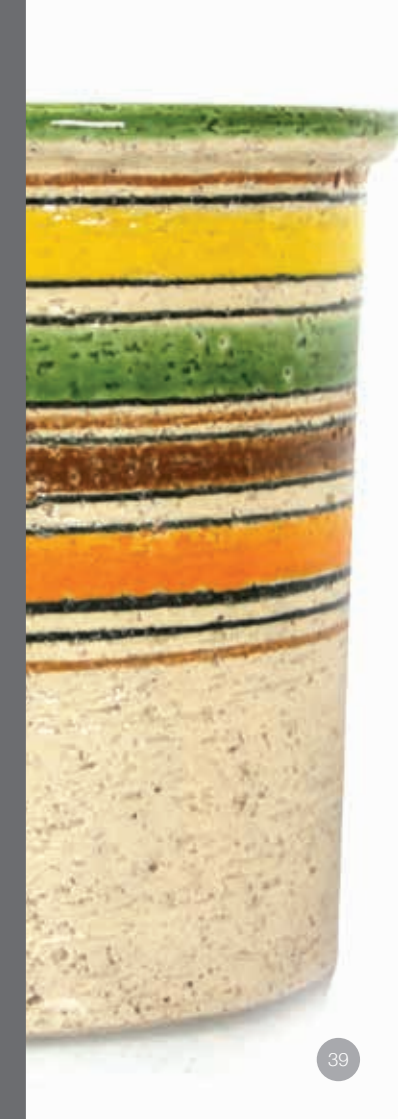
- Items constructed pre-1950. [Regulation 4(a)]
- Items being sold to someone who is in the business of reupholstering furniture. [See Regulation 4(b) and Consumer Protection Act 1987, s.46(7)]
- Items being sold to someone who is in the business of dealing in furniture. [Regulation 14(1)]
- Items being sold that will not be used in a domestic setting in the UK; e.g. for export, for use in a museum or theatre, as a work of art. [Regulation 3(1a) and 4(c)]

The Mid-Century period has been recognised as an area of increased interest to collectors for many years now. The relevant soft furnishings in our sales have been carefully selected to be collector's pieces which are purchased for their design qualities.

Soft furnishings in this sale are being sold as collector's items and are NOT intended for private use in the UK. They may not be in compliance with the Furniture & Furnishings (Fire) (Safety) Regulations 1988 and should be re-upholstered to conform to BS 5852 prior to any use in a domestic dwelling.

Bids are only accepted on the agreement that the furnishings will not be used in a domestic dwelling in the UK.

This policy is in-line with all major UK auctioneers and the Mid-Century trade.



203 A Georg Schmider vase of ovoid form incised with leafy motifs on a mottled blue ground, h. 12 cm

Est £30 - £50



204 An Italian pottery table lamp base decorated with a horse and rider by Marcello Fantoni (1915-2011), signed, h. 28 cm excl. fitting

Est £80 - £120

205 A Jasba pottery 'Elhno' dish of oval form incised with swirl and diamond shaped motifs, w. 28 cm and four further items of pottery (5)

Est £30 - £50

207 J. Corfield (20th/21st century), 'Black Cuillin', signed, inscribed, dated Feb '95 and numbered 1/1, coloured etching, image 58 x 46.5 cm, together with a further work by the same hand titled 'Calcite Cavern II' (2)

Est £50 - £80

208 Lisa Takahashi (Contemporary), 'The Chain Gang', coloured lithograph, 28 x 19 cm, an artwork of a windmill by Farina Noorani and a botanical print of pears (3)

Est £20 - £30

206 A pair of vases of waisted tapered form, each decorated with black and white stripes on an orange ground, h. 20 cm together with three similarly decorated items (5)

Est £30 - £50



209 After Georges-Henri Rouault (1871-1958), 'The Blue Bird', coloured lithographic print, 57 x 41.5 cm

Est £30 - £50

211 A Kienzle mantle clock in a plain rectangular mahogany case with brass coloured fittings, w. 24 cm

Est £30 - £50

212 A Phillips 'Discoverer' helmet shaped TV,

Est £100 - £150

210 After Peter Blake CBE, RDI, RA (1932-), 'Babe Rainbow', screenprint on tin, published by Dodo Designs, London, 66 x 44cm

Est £200 - £300



213



213 A German Staff 'Tulip' table lamp, the cylindrical orange shade on a white base, max h. 86 cm

Est £400 - £600

216

Paolo Rizzato (Italian, b. 1941) for Flos, a 265 wall/ceiling light with an adjustable mount and arm, originally designed in 1973

Est £250 - £300



214

Michael Peel (1940-2017), 'Roadside, May 1973, 1'. signed, inscribed and numbered 20/44, limited edition print, image 41.5 x 57 cm, together with three further works from the same series (4)

Est £250 - £350

215

Paul Bennett (20th/21st Century), 'Fractionals', signed in pencil, monochrome print of folded paper, 17.5 x 22,5 cm

Est £20 - £30



217

Anthony Scullion (b. 1967), 'Oracle', unsigned, oil on canvas, image di. 38 cm, gallery label verso

Est £400 - £600

218

Anthony Scullion (b. 1967), 'Hiraeth', unsigned, oil on canvas, image 23 x 19 cm

Est £400 - £600

217

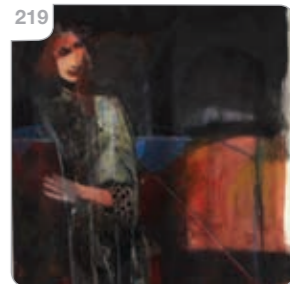


219

Jonathan Hood (Scottish, b. 1957), A female figure, signed and dated 2000, mixed media, image 35 x 27 cm

Est £200 - £300

219





220 After Laurence Stephen Lowry (1887-1976), 'The Pond', lithographic print, image 49 x 66 cm, together with 'Mainstone' (2)

Est £30 - £50



221 Lorenzo Quinn (Italian, b.1966), 'Gravity' (Series), 2010, signed and numbered, limited edition 16/495, 41.5 x 28.5 x 9.5 cm, with Inverart certificate *Please note that Artist's Resale Rights will apply to this lot

Est £2000 - £3000



222 Shaun Brosnan MRSS, a wall relief sculpture in beaten lead modelled as a partial face and neck, 42 x 34 x 8 cm

Est £600 - £1000

223 Dariusz Zieliński (Polish, b. 1975), a bronze sculpture modelled as a man with a bicycle and globe, stamped with initials, 37.5 x 35.5 x 15 cm

Est £400 - £500

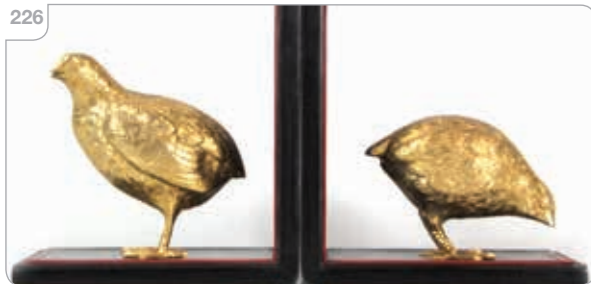


224 Dariusz Zieliński (Polish, b. 1975), a bronze sculpture entitled 'Butterfly Effect', stamped with initials, circa 2013, 32 x 29 x 16 cm
Est £400 - £500

225 A nest of three Danish teak occasional tables by BRDR Furbo Spottrup, max. 41 x 52 x 49 cm
Est £50 - £80

226 A pair of Gucci black leather bookends, each mounted with a gilt metal figure of a partridge, h. 18 cm (2)
Est £150 - £200

227 Michael Evin Nolan (Irish, 1930-2016). Geometric motifs in shade of purple, signed verso, acrylic on canvas 106.5 x 106 cm
Est £100 - £150



228 A mixed media woven tapestry in shades of pink, blue and yellow, 85 x 90 cm
Est £30 - £50

229 Brenda Hartin (20th/21st Century), 'Scorched Earth I', signed, inscribed, dated 2003 and numbered 4/100, textured print, image 25 x 25.5 cm, together with seven further prints from the same series (8)
Est £60 - £100



230 Brenda Hartin (20th/21st Century), 'Network', signed, inscribed, dated 2004 and numbered 5/100, textured print, image 61 x 45.5 cm, together with two further works by the same artist (3)
Est £30 - £50

232 Sidney Robert Nolan (1917-1992), 'Burke and Wills Expedition III', signed, artists' proof, image 65 x 74.5 cm
Est £150 - £200

231 R. (?)Bach... (20th/21st Century), 'Sensory III E', indistinctly signed and inscribed, coloured print, image 53 x 74 cm, together with another work by the same artist (2)
Est £40 - £60

233 Ardyn Halter (b.1956), 'Helvetia', signed, artists' proof, image 78.5 x 92 cm
Est £50 - £80

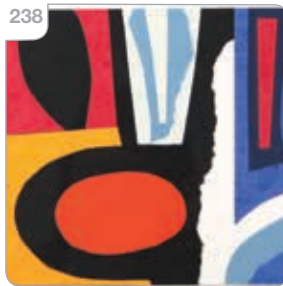


234 ..Fox (20th/21st Century), Abstract canal scene, signed and dated '97, coloured print, image 61 x 61 cm
Est £30 - £50

- 235 Unknown (20th/21st Century), 'Manuscript' indistinctly signed, inscribed and numbered 38/50, coloured print,, image 50 x 72.5 cm
Est £30 - £50

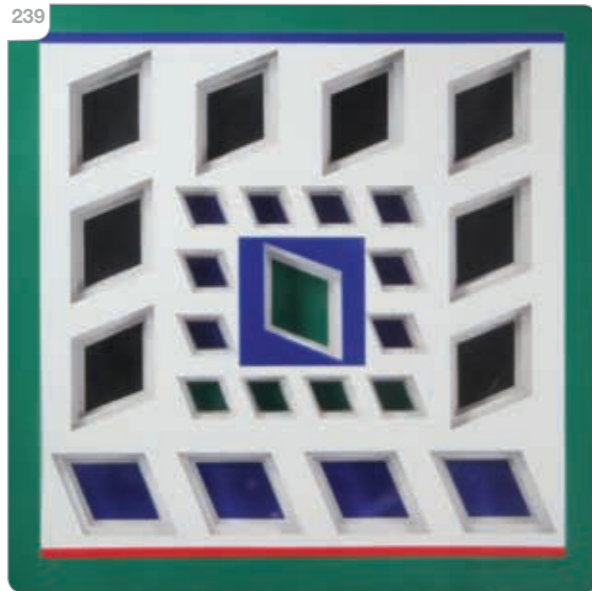


- 236 Unknown (20th/21st Century), Geometric boxes in blue and yellow, unsigned, coloured print, 46.5 x 46.5 cm
Est £30 - £50



- 238 Attributed to Rupert Loydell (20th/21st Century), Untitled, paper collage, unsigned, image 15 x 18.5 cm
Est £30 - £50

- 237 Govaerts (20th/21st Century), 'La Vague', signed, charcoal, 38 x 38.5 cm, together with a similar sketch, signed 'RG' (2)
Est £30 - £50



- 239 Gregory P. Brown, (active, 1973-1978), 'Blue Solo', unsigned, but labelled verso, layered plastic, 37 x 37 cm
Est £60 - £100

- 240 Unknown (20th/21st Century), Circle, unsigned, stitched paper, 50 x 34 cm, together with another work by the same hand (2)
Est £30 - £50

- 242 After Charley Harper (American, 1922-2007) 'Canyon Country', US National Park Service, contemporary lithographic poster, originally issued in 1990, 99 x 74 cm
Est £50 - £80

- 244 After Charley Harper (American, 1922-2007) 'The Rocky Mountains', US National Park Service, contemporary lithographic poster, originally issued in 1991, 99 x 74 cm
Est £50 - £80

- 241 After Wiktor Górka (Polish, 1922-2004), 'Hovikodden Mot Polsk Kultur', lithographic poster, 67 x 98 cm
Est £60 - £100

- 243 After Charley Harper (American, 1922-2007) 'Glacier Bay, Alaska', US National Park Service, contemporary lithographic poster, originally issued in 1986, 99 x 74 cm
Est £50 - £80

- 245 After Charley Harper (American, 1922-2007) 'The Sierra Range', US National Park Service, contemporary lithographic poster, originally issued in 1990, 99 x 74 cm
Est £50 - £80



246 After Charley Harper (American, 1922-2007) 'The Rocky Mountains', US National Park Service, contemporary lithographic poster, originally issued in 1991, 60 x 42 cm
Est £40 - £60

247 After Charley Harper (American, 1922-2007) 'Atlantic Barrier Islands', US National Park Service, contemporary lithographic poster, originally issued in 1986, 60 x 42 cm
Est £40 - £60

248 A Tremaen-style double cube table lamp decorated with the Prosthira seal, h. 42 cm (incl. bulb fitting)
Est £60 - £80

249 In the manner of Bernard Rooke (b. 1938), a studio pottery vase or lamp base of globular form with four relief roundels, h. 33 cm, di. 35 cm
Est £50 - £80

250 Robert Jefferson for Poole, a pair of 'Helios' cuboid lamps with opaline shades, h. 36 cm, together with a similar 'Helios' lamp (3)
Est £40 - £60



251 Pamela Nash (1925-1986), a Brutalist stoneware two-handled vase with enamelled decoration, ink initials to the base, h. 21 cm, together with another Nash vase with enamelled decoration, unsigned, h. 8 cm (2)
Est £100 - £150

254 A pair of contemporary Karlsson circular wall clocks, di. 37 cm (2)
Est £40 - £60

255 A pair of contemporary Karlsson circular wall clocks, di. 37 cm (2)
Est £40 - £60

253 A group of seven 1970's cylindrical pottery vases decorated with incised motifs by Graham Fern (Porthleven), monograms to the bases, max. h. 25 cm (7)
Est £150 - £200



256 A pair of contemporary Karlsson circular wall clocks, di. 37 cm (2)
Est £40 - £60

257 An early 2000's Swedish white metal floor spot light designed by Ola Wihlborg, labelled
Est £40 - £60

258 A Danish teak hall mirror, the rectangular plate over a small shelf, 107 x 40 cm
Est £80 - £120

259 A 1960's Danish teak and crossbanded nest of occasional tables by BC Mobler Vejle, labelled, 59 x 39 x 51 cm
Est £60 - £100



260 An Art Deco walnut desk by László Hoenig (1905-1971) with an arrangement of seven drawers, on square tapering legs, badge to the interior of the drawer, 152 x 56 x 75 cm
Est £100 - £200

261 Terry Wood (b.1952), Abstract study in shades of green, yellow, red and blue, signed verso, acrylics on box canvas, 100 x 120 cm
Est £80 - £120

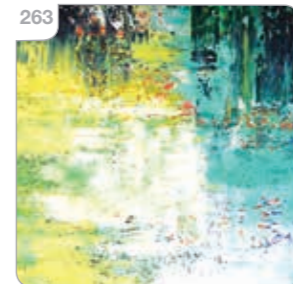


262 Terry Wood (b.1952), Abstract study in shades of green, yellow and blue, signed verso, acrylics on box canvas, 120 x 100 cm
Est £80 - £120

264 A 1960's/70's teak room divider with two sliding doors on turned tapering legs, 107 x 166 x 25 cm
Est £150 - £200

262 Terry Wood (b.1952), Abstract study in shades of green, yellow and blue, signed verso, acrylics on box canvas, 120 x 100 cm
Est £80 - £120

263 Terry Wood (b.1952), Abstract study of Monets garden, signed verso, acrylics on box canvas, 91 x 121 cm
Est £80 - £120



265 A 1960's Danish teak and crossbanded extending dining table with two fitted leaves, by Gudme Moblefabrik, 160-258 x 105 cm
Est £100 - £200

266 A 1970's Uniflex teak chest of six drawers on sleigh-type supports, 131 x 50 x 71 cm, together with a matching bedside cabinet and a wardrobe (flatpack)
Est £150 - £200

267 A pair of Habitat 'cube' storage units, each with two doors and two open galleries, 80 x 40 x 80 cm (2)
Est £40 - £60

268 A 1960's Greaves & Thomas sofa bed with cream upholstered seats on a teak frame, w. 205 cm, together with a pair of matching armchairs *SFP
Est £400 - £600

269 1960's School, A South European/North African village, indistinctly signed and dated 1968, oil on paper, image 25 x 39 cm, together with another matching (2)
Est £50 - £80

270 A 1960's British walnut and crossbanded extending dining table together with six matching chairs, including one carver *SFP
Est £60 - £80

271 A 1960's Danish dining suite in Brazilian rosewood designed by Søren Ladefoged including a drawer-leaf table, 140-253 x 84 cm, together with six matching chairs (7) CITES Article 10 Transaction Specific Ref: 25GBA104PN1WY *SFP
Est £600 - £800

272 A 1960's Danish spindle-back rocking chair in Brazilian rosewood upholstered in cognac leather designed by Arne Vodder (1926-2009) CITES Article 10 Transaction Specific Ref: 617822/06 *SFP
Est £300 - £500



273 Charles Eames (American, 1907-1978) & Ray Eames (American, 1912-1988) for Vitra, a set of four 2015 DSW 'Eames Plastic Chairs' with mustard shells and ebonised legs, labelled
Est £250 - £300



275 A Swiss 'Carat' three-seater sofa upholstered in black leather on a chromed tubular frame by Züco, w. 180 cm *SFP
Est £300 - £500

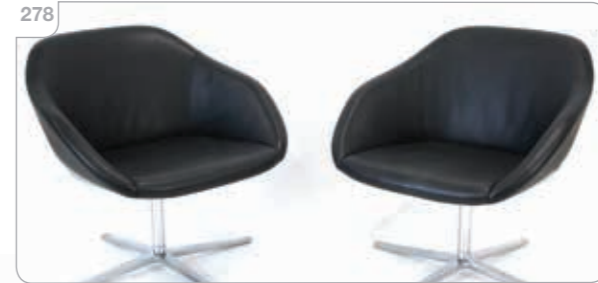
276 A Swiss 'Carat' armchair upholstered in black leather on a chromed tubular frame by Züco *SFP
Est £150 - £200



274 A Swiss 'Carat' three-seater sofa upholstered in black leather on a chromed tubular frame by Züco, w. 180 cm *SFP
Est £300 - £500

277 Charles Eames (American, 1907-1978) & Ray Eames (American, 1912-1988) for ICF, a 'Softpad' chair upholstered in black leather on a chromed height and tilt adjustable frame with a five-star swivel base on castors, ICF labels
Est £300 - £500

278 Luke Pearson & Tom Lloyd for Walter Knoll, a pair of 'Turtle' chairs upholstered in black leather on chromed four-star bases *SFP
Est £200 - £300



279 EOOS for Walter Knoll, an 'Oota' side table, the smoked glass circular surface resting on a wirework base, di. 52 cm, h. 47 cm
Est £100 - £200



280 Verner Panton (Danish, 1926-1998) for Vitra, a 2000's 'Cone' coffee table, labelled, di. 79 cm, h. 41 cm
Est £150 - £200

281 Arne Jacobsen (Danish, 1902-1971) for Fritz Hansen, a set of six 2006 Model 4130 'Grand Prix' stacking chairs, the 195 black ash shells on tubular legs, labelled
Est £1000 - £1500

284



284 Don Chadwick (American, b. 1936) for Herman Miller, a set of three modular seats upholstered in grey/pale blue on moulded plastic bases *SFP

Est £100 - £150

285

EOOS for Walter Knoll, a 'Living' daybed upholstered in black with an adjustable on matt legs *SFP

Est £200 - £300

286

EOOS for Walter Knoll, a 'Living' daybed upholstered in black with an adjustable on matt legs *SFP

Est £200 - £300

287

Lee Reynolds (American, 1936-2017), A harbour scene, signed, oil on canvas, image 121 x 151 cm

Est £80 - £120

282

Piet Hein (1905–1996) and Bruno Mathsson (Swedish, 1907-1988) for Fritz Hansen, a 2007 'Superellipse' dining table, the white laminate surface on four tubular supports, labelled, 170 x 100 x 70 cm

Est £250 - £300

283

A pair of contemporary white moulded plinths or stands, 40 x 40 x 80 cm

Est £50 - £80



290



292

A group of Swedish, British and other glass including an Alsterfors red cased-glass vase, a Whitefriars 'Molar' vase etc. (10)

Est £80 - £120

288

An Art Deco style cart or trolley by Torck, the chromed frame supporting a simulated rosewood removable tray top and second fixed tray with bottle holder, on four castors

Est £80 - £120

291

A 1980's Swiss brown leather upholstered executive desk chair on a five-star swivel base by Girsberger *SFP

Est £60 - £100

293

A 1970's Merrow Associates two-tier trolley in Brazilian rosewood with a chromium-plate flattened steel frame and leather trim to the handles, 67 x 76 x 47 cm *CITES Transaction Specific Ref: 26GBA10WVDK8N

Est £400 - £600

289

An Art Deco style cart or trolley by Torck, the chromed frame supporting a white removable tray top and second fixed tray, on four castors

Est £80 - £120

290

A B.A.D. architect's chair with bentwood seat and back on a tubular support, labelled, circa 1955

Est £40 - £60



294 A 1960's Brazilian rosewood sideboard with three sliding doors, steel trim and sycamore interior, 81.5 x 265 x 46 cm
*CITES Transaction Specific Ref: 26GBA106A5DST
Est £2500 - £3000

295 Richard Hornby for Heals, a teak two-tier coffee table on triangular form legs, with a glass cover, 120 x 40 x 36 cm
Est £80 - £120



296 A 1950/60's occasional table, the surface set with brightly coloured tiles by Roger Capron (French, 1922-2006) of Vallauris, within a cast metal frame, 63 x 31 x 43 cm
Est £400 - £600

297 Carsten Gandrup, a Danish articulated guardsman figure with a fur hat, in the style of Kay Bojesen, h. 87 cm
Est £40 - £60

298 Victor Wilkins (1878-1972) for G-Plan, a late 1960's hexagonal lamp table, di. 47 cm, h. 45 cm
Est £150 - £200



299 A 1960's 'Lumitron' ceiling light of mushroom form designed by Robert Welch
Est £60 - £80



300 A 1960's Danish teak and crossbanded nest of three occasional tables on slender legs joined by stretchers, stamped, 58 x 39 x 47 cm
Est £60 - £100



301 A Norman Stuart Clarke glass vase decorated with a cloudy landscape, h. 12 cm, engraved signature to base

Est £60 - £100

302 A Norman Stuart Clarke glass vase in shades of yellow and orange, h. 9 cm, engraved signature to base, together with a Selkirk Glass paperweight (2)

Est £40 - £60

303 A Norman Stuart Clarke pale purple glass scent bottle and stopper, h. 9.5 cm, engraved signature to base, together with a matching vase (2)

Est £40 - £60

304 Linda Green (20th/21st century), Study of a seated nude, signed, pastels, 36.5 x 25.5 cm

Est £60 - £80



305 A pair of fossilised wood bookends from Oregon, USA, h. 31 cm each *Purchased from Harrods, Knightsbridge in 1989, and sold with the sales receipt.

Est £150 - £200



306 Christopher Logue: 'The Girls', 1969 limited edition 5/50, signed and numbered by the author (only 24 offered for sale), together with 17/50, each in multicoloured A4 cloth boards of different designs, together with 'Christopher Logue, A Bibliography 1952-97' by George Ramsden, 9/250 in quarter calf binding with cloth boards featuring a coloured vortical design, signed and numbered by Logue (3)

Est £250 - £350



307 Niels Otto Møller (Danish, 1920-1982) for JL Møller, a Model 56 teak open armchair in pale brown cloth upholstery *SFP

Est £300 - £400

308 Niels Otto Møller (Danish, 1920-1982) for JL Møller, a teak extending dining table, 160 x 90 cm, together with a set of four Model 75 chairs in grey cloth upholstery *SFP

Est £1000 - £1500



309 Achille and Pier Giacomo Castiglioni for Flos, an 'Arco' floor lamp on a white marble base

Est £600 - £1000

310 An Italian red 'Boby' trolley by Joe Colombo, impressed signature, h. 73.5 cm

Est £50 - £80

311 An Italian red 'Boby' trolley by Joe Colombo, impressed signature, h. 73.5 cm
Est £50 - £80

312 A teak standard lamp base h. 142 cm
Est £60 - £80

313 A teak two tier sleigh style coffee table on castors, w. 121.5 cm
Est £50 - £80

314 A West German pottery table lamp of gourd form decorated in a treacle glaze, h. 56 cm
Est £30 - £50

315 A brass three section stick stand on a triangular weighted base, h. 45 cm
Est £30 - £50

316 A pair of 1980/90's oak armchairs, each upholstered in green cloth on a four star base (2) *SFP
Est £200 - £300



317 After Pierre Paulin for Artifort, a pair of 'Orange Slice' style chairs, each in red cloth upholstery on tubular legs (2) *SFP
Est £80 - £120



318 After Pierre Paulin for Artifort, a pair of 'Orange Slice' style chairs, each in red cloth upholstery on tubular legs (2) *SFP
Est £80 - £120

319 A Dutch sapele single pedestal desk, the three drawers with brass handles on painted metal base, w. 120 cm *Formule Meubelen label to underside
Est £100 - £150

320 A 1960's Belgian teak sideboard by Bas van Pelt, the central four ebonised drawers flanked by a pair of cupboards on open tapered legs, w. 220 cm
Est £300 - £400



324



321

A pair of 1960's button cloth upholstered armchairs on castors, attributed to G-Plan (2) *SFP

Est £100 - £200

322

E. Gomme for G-Plan, a pair of 'Librenza' ebonised ladderback dining chairs with cream vinyl seats (2) *SFP

Est £50 - £80

323



323

A set of ten 1960/70's dining chairs attributed to Gordon Russell (1892-1980), each in orange striped cloth upholstery, including a pair of carver armchairs (10) *SFP

Est £80 - £120

324

A pair of G-Plan Model 6250 wingback armchairs with red button upholstery on swivel bases (2) *SFP

Est £300 - £500

325

A 1950's desk or elbow chair with a beech frame and tan leather upholstery *SFP

Est £40 - £60

326

A set of three Elliot Newbury (EON) teak and black vinyl dining chairs, together with a British teak extending dining table, 138 x 72 cm (4) *SFP

Est £60 - £100

327

A 1970's coffee table, the glass surface resting on perspex slabs joined by a wicker central tier, di. 89 cm, h. 40 cm

Est £60 - £80

328

In the manner of Borge Mogensen (Danish, 1914-1972), a two-seater sofa upholstered in black leather, on beech legs, w. 141 cm *SFP

Est £300 - £400

327



328



329

A 1970's Danish three-seater sofa upholstered in black leather, on beech legs, w. 184 cm *SFP

Est £150 - £200

330

A Christoph Palme & Co. brass plafonnier or ceiling light with clear hanging lustres

Est £60 - £80

331

An Italian 'Aspen' three-seater sofa by Cassina *SFP

Est £400 - £600

332

An Italian 'Aspen' two-seater sofa by Cassina *SFP

Est £300 - £500

Hammer Prices - Bedford, February 2026 Sale

1	£170	31	£55	69	£24	103	£700	143	£650	177	£650	211	£220	247	£220
2	£140	33	£260	70	£26	104	£200	144	£60	178	£300	212	£30	248	£140
3	£220	34	£80	72	£900	105	£240	145	£40	179	£750	213	£120	249	£110
4	£140	35	£320	73	£1500	106	£220	146	£55	180	£220	214	£35	250	£130
6	£95	36	£130	75	£1000	107	£100	147	£55	181	£260	215	£65	251	£170
7	£30	37	£45	76	£800	108	£110	148	£26	182	£320	216	£60	252	£320
8	£60	38	£35	78	£650	110	£380	149	£22	184	£60	218	£65	253	£160
10	£80	39	£35	79	£110	111	£150	151	£50	185	£190	219	£65		
11	£650	40	£50	80	£180	113	£75	152	£50	186	£150	220	£65		
12	£22	42	£50	81	£75	114	£70	153	£40	187	£40	221	£95		
13	£65	43	£180	82	£55	117	£170	154	£90	188	£240	222	£95		
14	£700	44	£65	83	£30	118	£35	155	£65	189	£80	223	£95		
15	£380	45	£440	84	£620	119	£130	156	£50	190	£360	226	£200		
16	£220	47	£180	85	£40	120	£85	157	£24	192	£65	227	£200		
17	£140	48	£60	86	£150	121	£55	158	£50	193	£260	228	£35		
18	£20	49	£120	87	£75	128	£80	159	£20	194	£160	229	£220		
19	£50	51	£80	88	£120	129	£45	160	£85	197	£20	231	£160		
20	£170	52	£60	93	£320	132	£40	162	£20	198	£320	232	£50		
22	£380	53	£75	94	£200	133	£140	163	£50	202	£90	234	£50		
23	£60	56	£45	95	£45	134	£420	165	£130	203	£170	235	£130		
24	£100	57	£95	96	£240	135	£100	170	£90	204	£190	236	£220		
25	£20	59	£75	97	£200	136	£75	171	£280	205	£160	240	£220		
27	£65	63	£40	98	£60	137	£150	172	£22	207	£40	241	£95		
28	£60	64	£55	99	£150	138	£35	173	£45	208	£900	242	£80		
29	£90	67	£100	101	£1500	141	£35	175	£30	209	£140	245	£120		
30	£45	68	£28	102	£550	142	£40	176	£650	210	£60	246	£130		

Next Sale

Bedford Auction Centre
Friday 21st August 2026
Commencing at 10am

Visit our website for full details
www.peacockauction.co.uk



Retro Video Games & Consoles

TO BE SOLD BY LIVE AUCTION

Saturday 30th May 2026

Commencing at 10am

We are now inviting entries for this forthcoming specialist sale. If you own anything which you think might be suitable we are happy to give complimentary auction advice. Please contact auctioneer Harry Shiner on 01234 266 366 or retro@peacockauction.co.uk

SALE ENTRIES NOW INVITED

Bedford Auction Centre
Eastcotts Park, Wallis Way, Bedford, MK42 0PE
01234 266 366 or info@peacockauction.co.uk

peacockauction.co.uk



Mid Century Design

TO BE SOLD BY LIVE AUCTION

Friday 21st August 2026

Commencing at 10am

Mid Century classic designed furniture and collectables have proved to be very popular with buyers looking for something out of the ordinary to furnish their homes. Our contemporary sales are jam-packed with British, Scandinavian and American designs by 'outside of the box' thinkers of the 1950s through to present day.

Please contact auctioneer Matthew Baker on 01234 266 366, Whatsapp on 07802 473546 or design@peacockauction.co.uk

SALE ENTRIES NOW INVITED

Bedford Auction Centre

Eastcotts Park, Wallis Way, Bedford, MK42 0PE
01234 266 366 or info@peacockauction.co.uk

peacockauction.co.uk